

Zum Rote Öpfel

Gemeinde Hefenhofen

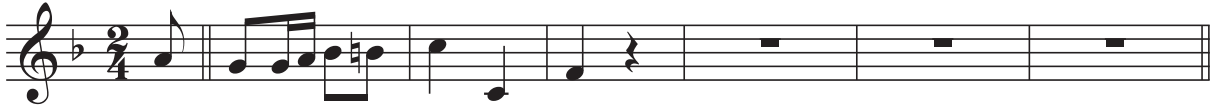
Intro

Gm

C7

F

Ablauf: AA / BB / Bass-Solo / C / AA



A

F

Gm

C7



C7

F



Dm

Gm



C7

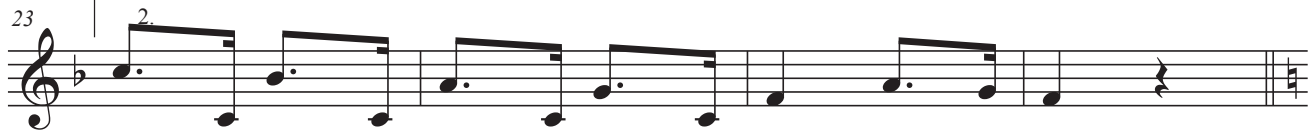
F

C7



C7

F



B

G7

C



Dm

G7

C



G7

Am



2

Zum Rote Öpfel

39 G7 C G7 C

Übergang zu Bass-Solo

43

Bass-Solo

47 Cm

51 Fm

55 Dm7(b5) G7(b9) Cm

59 Dm7 G7

63 Cm

67 Cm C7(b9) Fm

71 Dm7(b5) G7(b9) Cm

75 Dm7(b5) G Cm

Zum Rote Öpfel

C

79 Cm

83 Cm Dm7(b5) G7(b9)

87 Dm7(b5) G7(b9) Cm

91 Dm7 G7

95 Cm

99 Cm Dm7(b5) G7(b9)

103 Dm7(b5) G7(b9) Cm

107 Dm7(b5) G Cm